

Physical and Geographical Features of Bangladesh



Location and area of Bangladesh

- ▶ Situated in southeast Asia
- ▶ Surrounded by India, Myanmar and the Bay of Bengal
- ▶ Total area: 147,570 square km
- ▶ Land area: 133,910 square km
- ▶ Water area: 10,090 square km



CAUSES OF LESS GEOGRAPHICAL DEVELOPMENT IN BANGLADESH

Literacy rate

Sense of development

Cooperation among people

Development funds

Managing funds

Development initiatives

Suitable leadership

Number of population

Demands for goods and services

Transportation and communication facilities



CLIMATE OF BANGLADESH

- Tropical monsoon climate
- Three distinct seasons in Bangladesh
 - ✓ Hot and humid summer from March to May
 - ✓ Humid and rainy season from June to October
 - ✓ Cool and dry winter from November to February



Impacts of Climate on the Economy of Bangladesh

Agricultural sector

Industrial sector

Forest lands

Business sectors

fisheries

Transportation and communication development

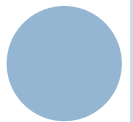
Develop standard of living

Increase national income

Increase export

Increase the fertility of land

SEASONS OF BANGLADESH



Religion in Bangladesh



Islam



Hinduism



Christianity



Buddhism

CULTURE OF BANGLADESH



Bengali
literature



music



food



dress



festival



Language



Education system

Primary level (grades 1-5)

Secondary level (grades 6-10)

Higher secondary level (grades 11-12)

Sports



Cricket



Football



Kabaddi



Hockey

TOPOGRAPHY OF BANGLADESH

1. **Tertiary Hills**
2. **Uplands/ Pleistocene Terrace**
3. **Recent Floodplains**

Tertiary Hills

- Low hill ranges
- High hill or mountain ranges

Uplands/Pleistocene terrace

- Barind tract
- Madhupur tract
- Tippera surface

Recent floodplains

- Old himalayan piedmont plain
- Tista floodplain
- Old brahmaputra floodplain
- Jamuna floodplain
- Haor basin
- Surma-kushiyara floodplain
- Meghna floodplain
- Ganges river floodplain
- Ganges tidal floodplain
- Sundarbans
- Lower atrai basin
- Arial beel
- Gopalganj-khulna peat basin
- Chittagong coastal plain
- Northern and eastern piedmont plain

- ◎ Flood plains
 - Deltaic plains
 - Coastal plains

Sea ports of Bangladesh



Chittagong
sea port



Mongla
sea port

Chittagong hill track



Keokradong



Tazing Dong



Saka Haphong

Rivers of Bangladesh

A serene sunset scene over a wide river. The sun is low on the horizon, casting a warm orange glow across the sky and reflecting on the water. A small boat is visible in the foreground, silhouetted against the bright light of the setting sun. The background shows a dark silhouette of a forested bank.

- Brahmaputra
- Buriganga
- Karnaphuli
- Padma river
- Surma river
- Meghna river
- Jamuna river
- Naf river

Barrages



Farakka barrage



Hardinge bridge



Bangabandhu bridge



Meghna bridge



Lalon Shah bridge



Karnaphuli bridge

MOSQUES IN BANGLADESH



Baitul
Mukarram



Sat Gambuj
Mosque



Bagha
Mosque



Sixty Dome
Mosque



Star Mosque



Noyabaad Mosque



Baitul Falah



Mazar's of Shah
Jalal

Temples in Bangladesh



Jagannath Temple



Kantojiu Temple



Jeshoreshwari Kali Temple



Dhakeshwari National Temple



Ramna Kali Mandir

Other Temples

- Boro kali bari
- Laxmi narayan mandir
- Swami Bagh temple
- Adinath Temple
- Kal Bhairab Temple
- Chandranath Temple

Memorials



Martyred
Intellectuals
Memorial



Jatiyo Smriti
Soudho



Shaheed Minar



Shabash Bangladesh



Suhrawardy Udyan



Ahsan Manzil

Museums



Folk art museum in Sonargaon

Preserving Bangladeshi traditions and culture



Bangladesh national museum in Dhaka

The exhibitions retrace the history of the country and are an insightful and educational tour of ancient worlds



Liberation war museum

Honoring the
Bangladeshi battle for
independence



Tribal cultural museum

Gain insight into the
groups of the
Chittagong hill tracts

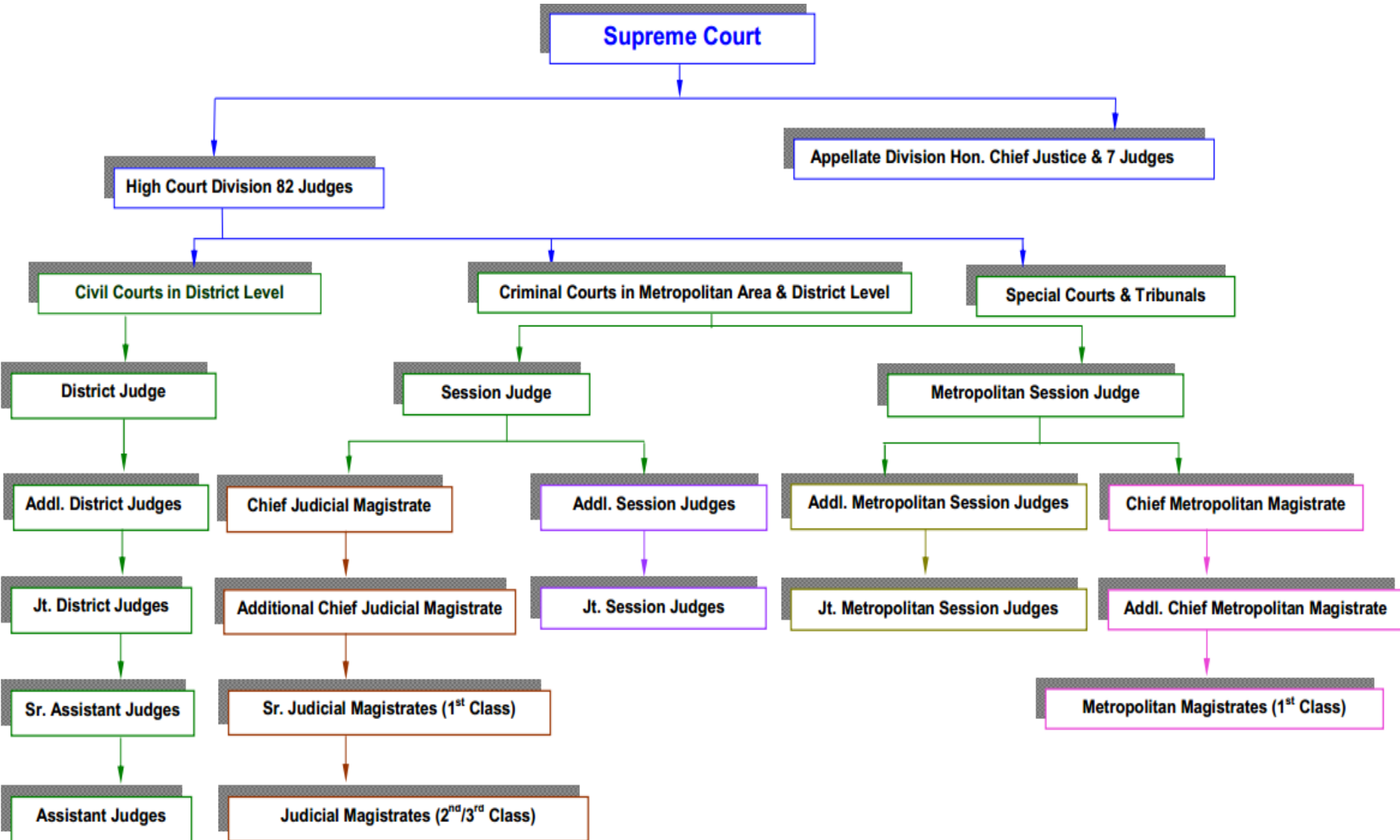


Varendra museum

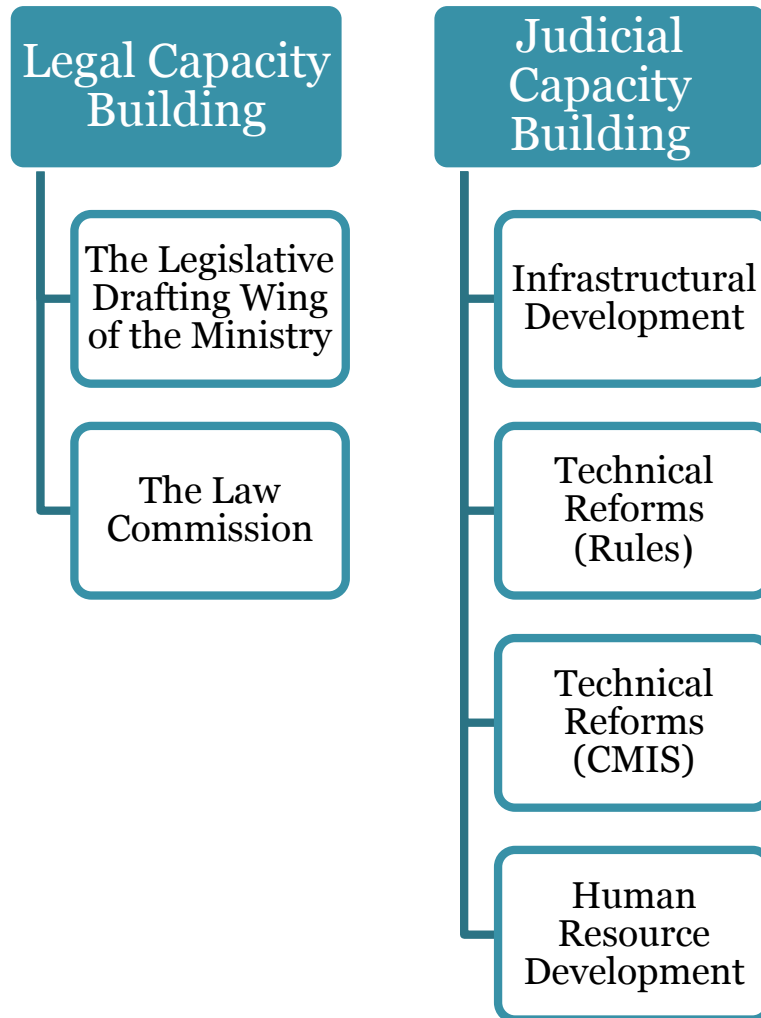
A treasure trove of
history and culture

Courts

Bangladesh Judiciary



LEGAL AND JUDICIAL CAPACITY BUILDING PROJECT



Bhavans in Bangladesh



The Banga Bhaban

Type: Official residence and principal workplace of the President of Bangladesh

Architectural style: Mughal architecture

Location: Dhaka, Bangladesh

Construction started: 1905



Jatiyo Sangshad Bhaban

Type: National Assembly Building

Architectural style: Modern, Monumental

Location: Dhaka, Bangladesh

Construction started: 1961

Completed: 1982

FORT



Lalbagh Fort



Hajiganj Fort



Sonakanda Fort

Flood

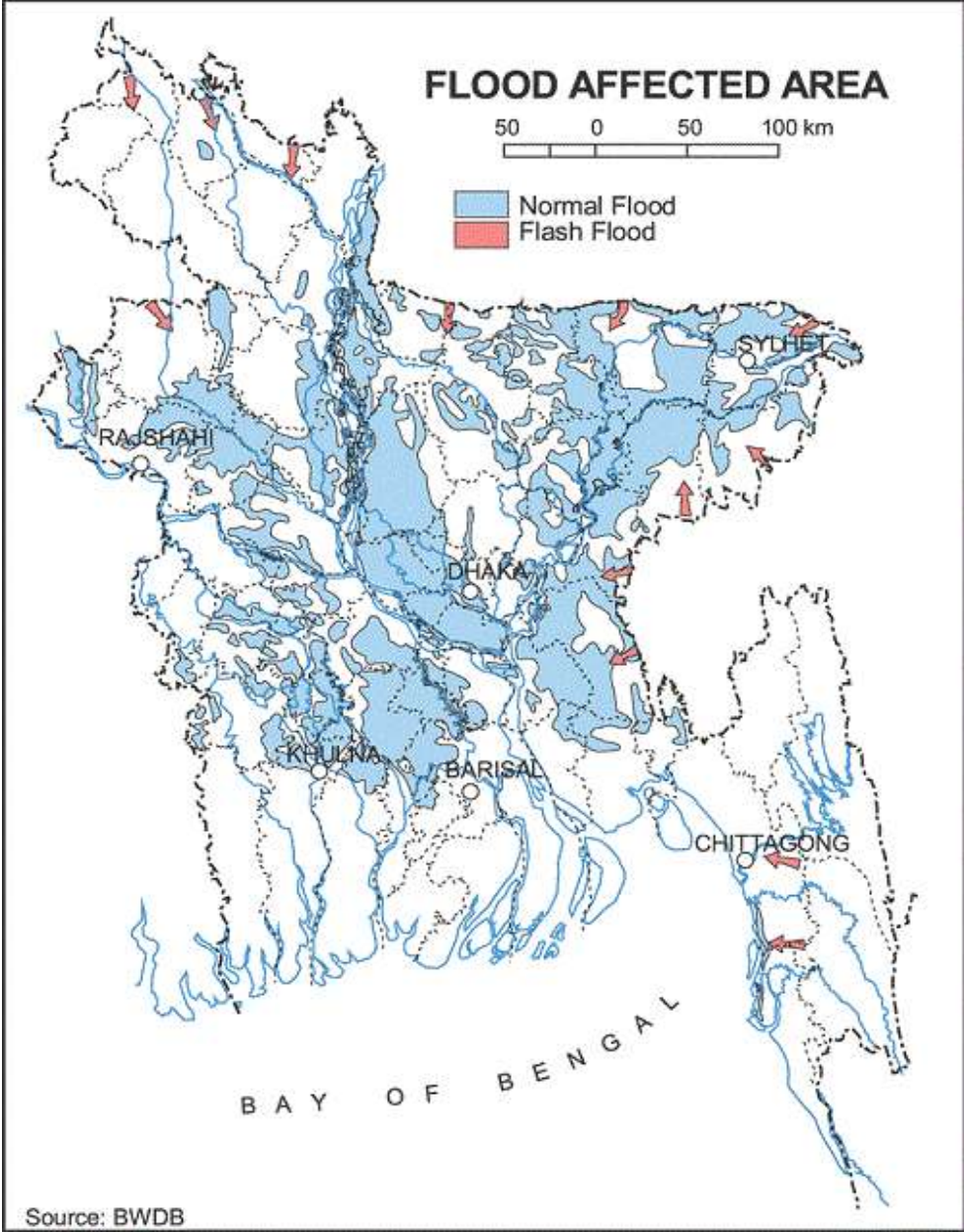
Rain water flood



Flash flood



Map of flood affected area



Monsoon

❖ Characteristics of monsoon in Bangladesh

- Two dry seasons with a low rainfall:
 - ✓ Hot and dry (summer)
 - ✓ Cool and dry (winter)
- Rainy season with very high rainfall
- High annual temperature (about 26°C)
- Seasonal distribution of rainfall
- High annual rainfall (more than 1800 mm)
- High humidity



Monsoons in Bangladesh

Monsoon causes other natural disaster

❖ Tidal upsurge

Cyclones in Bangladesh

- ❖ Storm Preparedness
- ❖ Significant Severe Cyclones Striking Bangladesh
- ❖ Composite of Cyclone Tracks Crossing the Bay of Bengal (1970 to 2005)
- ❖ Deadly Cyclones Striking Bangladesh
- ❖ Cyclones Tracking Over Bangladesh During the Twentieth Century





The 1970 Bhola Cyclone



Cyclone Sidr



The 1991 Bangladesh Cyclone

Tsunami



How Bangladesh Escaped
December 2004 Tsunami
Unscathed

Thank you 😊

